

THE CATALYST

SLIPPERY ROCK WATERSHED COALITION MONTHLY ACTIVITIES UPDATE

NEXT MEETING: TBD per COVID-19 regulations; tentatively planned for 7 PM on 11/11/21 at Jennings Environmental Education Center. Pizza/pop return; social distancing will be followed. 10/14/21 meeting attendance: J. Belgraden, C. Denholm, M. Dunn, D. Johnson, B. Kuban, S. Smith, F. VanAtta, S. VanDerWal

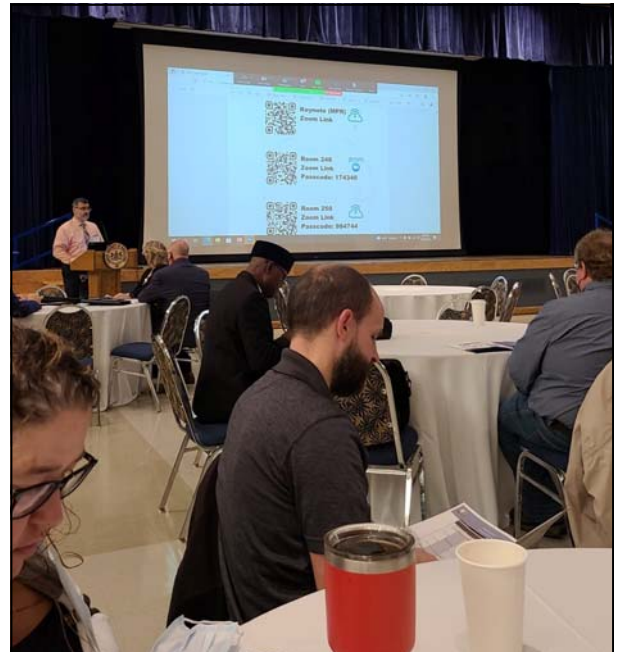
NW PA GIS Conference

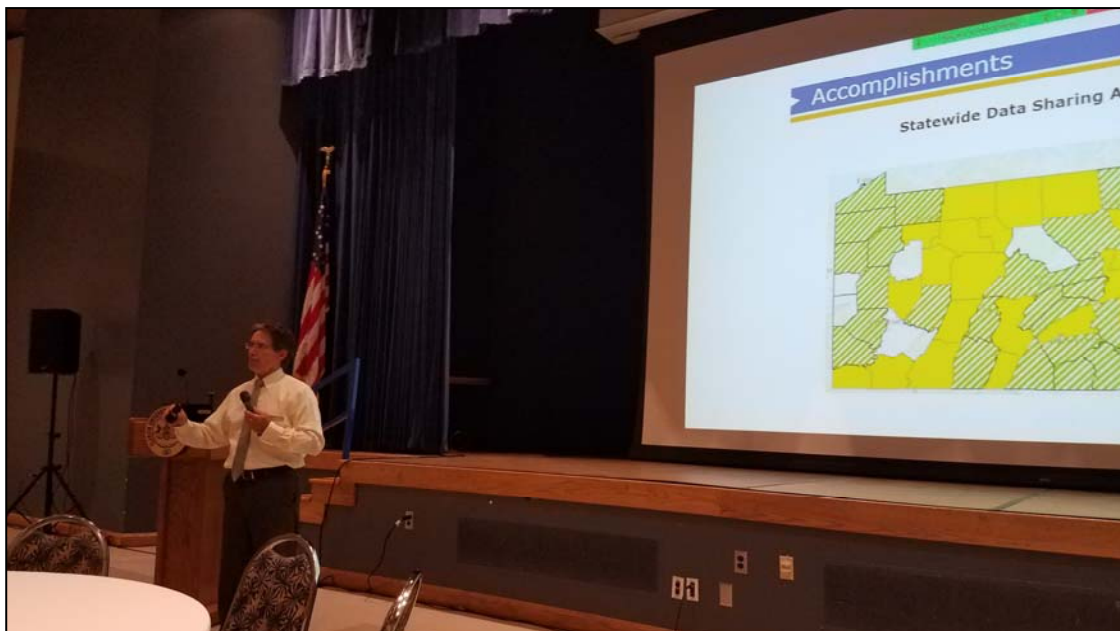
The 15th Annual Northwest PA GIS Conference took place October 28 and 29 at Clarion University. **Shaun Busler**, SRWC participant and member of the conference steering committee, was in attendance at the event. Participants were able to enjoy many networking opportunities in person with other GIS professionals and academics. The conference represented some of the best GIS practices in the community today, with the applications and means of data collection increasing exponentially over the past several years.

Many excellent speakers, both in-person and virtual, were all part of Shaun's conference experience. Rooms were equipped with cameras and microphones so that virtual speakers could interact with the audience. Some of the topics included riverbank erosion visualization, wind power, oceanic hot spots and earthquakes, GIS business strategies for success in the post-pandemic world, GIS in archaeology at Presque Isle, biodiversity in the Andes Region, an introduction to ArcGIS field maps, the Venango Path Project (Geography, History, and Environment), and patterns of civilizations in the Underground Railroad. Shaun even got to see one presentation make use of 3D glasses!

Shaun was pleased to attend this worthwhile event and earn about new trends and technology in the GIS industry, and was impressed by the GIS work and research conducted by several Clarion University students. Many thanks to Mr. James Geiger and Dr. Laura Delbrugge of Clarion University, for their opening remarks at the conference, as well as Mr. Michael Meyer and Mr. Kevin Zelinsky from Remington & Vernick Engineers, Inc. Thank you also to **Dr. Yasser Ayad**, Professor of GIS at Clarion, for his help in making this a successful in-person event.

The web site for this conference was recently redone by Shaun. Though still a work in progress, improvements can be seen at <http://nwpagisconference.com/>. Check it out to learn more!





Eric Jespersen, Executive Director of the State Geospatial Coordinating Board, gives the keynote address at the NW PA GIS Conference.

PA AMR Conference

October 27-29 marked an excellent, virtual, PA Abandoned Mine Reclamation Conference! Several SRWC participants took part in the event, including **Shaun Busler** and **Cliff Denholm**. Cliff's day-long workshop included an update on Datashed 3.0, providing conference attendees the latest information on the newest version of Datashed 3.0, how to use Datashed, how to add data, and interactive learning of the cloud-based system. For those unfamiliar with this tool, Datashed (www.datashed.org), is a free, open-source, web-based, GIS-enabled database that functions as a maintenance and data management tool for passive treatment systems. The website can store a variety of information related to both individual projects and overall watershed restoration efforts including water quality data, documents, maps, engineering design drawings, treatment technologies, photographs, etc. Datashed provides an open centralized repository to preserve this important information so that anyone with internet access can view, print, or download. User accounts are only needed for approved users who will be adding or editing the stored information. The website provides students, researchers, citizen scientists, and engineers with real data from existing treatment systems to conduct research and improve designs. Datashed can also be utilized for education/outreach efforts of watershed groups to highlight their projects. If you are not using Datashed and can see its many applications benefitting your organization, we encourage you to check it out.

Other conference highlights included the Keynote Address "Overcoming Challenges – A Bright Future" by Pennsylvania Department of Environmental Protection Secretary Patrick McDonnell. Secretary McDonnell addressed issues related to Abandoned Mines in Pennsylvania and the daunting task of cleaning them up in a challenging economy. Another important speaker was Pennsylvania State Senator Gene Yaw from Lycoming County. He is the primary sponsor of Senate Bill 832 that establishes a Clean Streams Fund for the Commonwealth, to be used to protect and restore Pennsylvania's streams and rivers to stimulate economic growth in our communities and improve the quality of life for all Pennsylvanians.

Because this conference was virtual in nature, there were many interesting virtual field trips offered. Some of these were virtual visits to counties all across the state: the Tanoma passive treatment system, Bear Run watershed, Twomile Run, Oneida #3 Treatment System, Broad Top Township, and Deer Creek. And as usual, the conference focused on its primary goals of sharing information about new AMD treatment system technologies, tools, and products, construction case studies and lessons learned, land remediation, reforestation, and reuse, water quality monitoring, operations, maintenance, and rehabilitation of treatment systems, Non-profit organization capacity issues, Community involvement, special events, education and outreach, coal mining history and heritage preservation, mapping, drones, equipment, and other helpful new technologies, legislative updates and concerns at all levels of government, and much more!



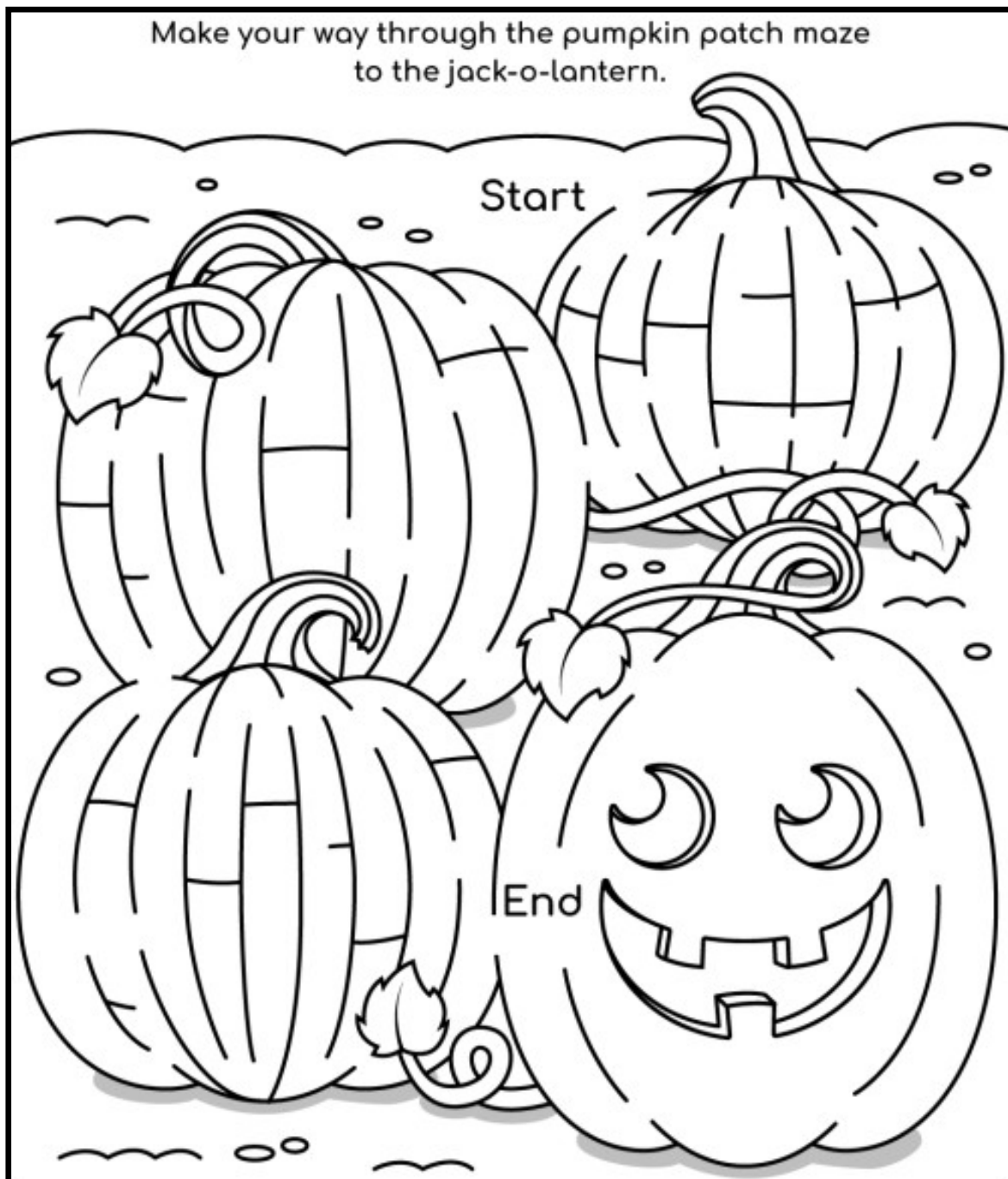
The KIDS Catalyst

SLIPPERY ROCK WATERSHED COALITION FUN ACTIVITY

Pumpkin Patch Maze



Here are some little-known pumpkin facts... pumpkins are actually a fruit! The word pumpkin comes from the Greek word "pepon" which means a large melon. The yellow-orange flowers that bloom on the pumpkin vine can be eaten. The state of Illinois grows the most pumpkins. Pumpkins were once thought to cure freckles and snake bites. Pumpkin was most likely served at the first Thanksgiving feast in 1621. Many people like roasting pumpkin seeds to eat, and they happen to be quite good for you! Below is a fun pumpkin patch maze! Make your way from start to finish. Send us your completed maze for a \$1 Amazon credit! Credits can be saved up to buy something really special!



Name _____ Age ____ Parent email address: _____



Slippery Rock Watershed Coalition c/o Stream Restoration Incorporated
A PA Non-Profit Organization
434 Spring Street Ext.
Mars, PA 16046

Thanks to The William & Frances Aloe Charitable Foundation, Environmentally Innovative Solutions, LLC, Dominion Peoples, Amerikohl Mining, Inc., Quality Aggregates Inc., Drs. Ron & Kathy Falk Family, BioMost, Inc., Allegheny Mineral Corporation and PA DEP for their support. For more information contact: Slippery Rock Watershed Coalition, c/o Stream Restoration Incorporated (PA non-profit), 434 Spring Street Ext., Mars, PA 16046 (724)776-0161, fax (724)776-0166, sri@streamrestorationinc.org, www.srwc.org. Oct. distribution: 240 copies