

THE CATALYST

SLIPPERY ROCK WATERSHED COALITION MONTHLY ACTIVITIES UPDATE

THIS MONTH'S MEETING: Thursday 9/9/10 at 7 pm at Jennings Environmental Education Center, pizza and pop provided. 8/12/10 meeting attendance: D. Johnson & V. Kefeli

Remember the Riverboat Cruise!!!

The Allegheny River is the featured site for this year's Port of Pittsburgh Ohio River Watershed Celebration, set for **Wednesday, September 15th**. Usually translated "fine river" or "beautiful river", the Allegheny River is about 325 miles long, and joins with the Monongahela River to form the Ohio River at the "Point" of Point State Park in downtown Pittsburgh—a beautiful site by boat!

Pre-cruise festivities begin at 11:00 AM, with a day full of lots to do! Adults and professionals on the "Networker Cruise" will sail the Allegheny from 1 PM to 4 PM on a trip which includes passing through the Highland Park Lock and Dam (*pictured at right*), a really cool experience! We hope you will join us as we share a day of watershed education and celebrate the local waterways. Featured topics will include watershed stewardship, river history, aquatic life, Pittsburgh's energy leadership, river recovery, river resources, and more. There will be educational poster displays, hands-on exhibits, interesting speakers giving presentations on a variety of watershed topics, watershed/environmental awards, and much more! Narrators will provide a guided narration of landmarks and sites of interest as we journey on the Allegheny, and, there will be ample time for networking among the cruise attendees.



This **free event** annually attracts hundreds of individuals involved with watershed groups, environmental professionals, business and industry, educators and students, local, state, and federal government, interested citizens, and many other folks! Registration is online and is already underway. To register, and for more information, please visit www.streamrestorationinc.org/rsvp. Please remember, the children's "Imagination Cruise" has reached capacity and is no longer accepting registrations. Any questions or comments can be sent to orwc@streamrestorationinc.org. Don't miss out on the fun! **Sign up soon!**

Chestnut-Willow Project Update

In an ongoing project at **Jennings Environmental Education Center**, SRWC soil scientist **Dr. Valentin Kefeli** surveyed the trees in his chestnut-willow project on August 8 with the help of Slippery Rock University student **Beth Rhin**. In this experimental project, American chestnut trees were planted along side of willow and poplar trees. Results from the chestnut-willow project included the following data collected by Dr. Kefeli and Beth: a count of 33 trees total, with the tallest being 130 cm high. The average height of trees from seedlings was 0.71 cm, the average height of trees grown from seeds was 51 cm, and the average height of trees transplanted to the hill industrial project was 98 cm. The oldest trees were 4 years old. Primary leaves were noted to have been affected by frost in April, but thankfully no trees were infected with disease! Chestnut trees have been susceptible to a disease known as chestnut blight fungus, which was accidentally introduced around the year 1900 and has decimated the population of chestnut trees across the country. Within 40 years, the near-4 billion-strong American chestnut population in Northern America was devastated. Efforts started in the 1930s and are still ongoing to repopulate the country with these trees. We support the effort to re-introduce the beautiful American chestnut trees and are excited about Valentin's project at JEEC.



Two of the **AMERICAN (!!!) chestnut trees** growing at the experimental test plot at Jennings Environmental Education Center. (See article on first page.) Some of the trees are nearly 4' tall after 4 years of growth with **no signs of blight.**



Mark Your Calendar!

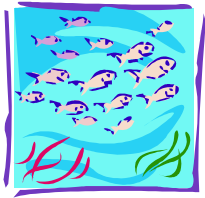
PA GIS Day Coming Soon!

PA GIS Day will be celebrated **November 17, 2010**. But what is “GIS” exactly? For those not familiar with the term, a geographic information system (GIS) integrates hardware, software, and data for capturing, managing, analyzing, and displaying all forms of geographically referenced information. GIS allows us to view, understand, question, interpret, and visualize data in many ways that reveal relationships, patterns, and trends in the form of maps, globes, reports, and charts. GIS Day is celebrated all around the world. More than 80 countries celebrated GIS Day in 2009! It is celebrated during the third week of November, on the Wednesday during Geography Awareness Week, a geographic literacy initiative sponsored by the National Geographic Society.

Shaun Busler of Stream Restoration Inc. and a participant in the SRWC is a GISP, or GIS Professional. Shaun has been using GIS in the design of the **Slippery Rock Creek Watershed Conservation Plan**, and has been a regular at the annual GIS Day celebrations held in Harrisburg. “It’s interesting talking to all of the other GIS professionals in the state,” says Shaun. He encourages anyone with an interest in learning more about the many applications of GIS in the world around us to attend GIS Day on November 17 at the Harrisburg Area Community College at the Midtown site. For those “experts” at GIS, you have the chance to put your skills to the test in the first annual GIS Day Map Contest! The top submissions will receive prizes and all entries will be displayed at the GIS Day event. This free event will include workshops and demos from students, local, state, and federal agencies, nonprofits, professional organizations, private industry, and others. The morning events will be geared to high school students and educators while the afternoon session will contain something for everyone! There will be a poster session for college students, the map contest, exhibit booths and more!



For additional information, please visit **www.gisday.com** or www.hacc.edu/Harrisburg/Midtown/Midtown-GIS-Day.cfm or look for information on the PASDA web site (<http://www.pasda.psu.edu/>).



The KIDS Catalyst

SLIPPERY ROCK WATERSHED COALITION FUN ACTIVITY



Back to "School"!

It's "back to school" time once again! In honor of school, we're taking a closer look at another kind of "school" - a group of fish! You may know that a group of fish which travels together is called a "school" of fish. But do you know what a group of lions is called? Or a group of ants? You can find out these answers and more in our word puzzle below! Simply unscramble the letters at the far right to discover the answers, and write them on the line. You can draw a picture of one of the groups of animals in the space provided. And if you mail us your completed paper, we will send you a free gift certificate! Don't forget to do your homework first, though!

A group of... is called a...

1. FISH

SCHOOL

OCOLHS

2. CHICKENS

LKCOF

3. ANTS

LOYONC

4. LIONS

EPIRD

5. WOLVES

CKPA

6. GEESE

GGGLEA

7. HORSES

HRDE

8. SNAKES

STNE

9. KANGAROOS

OMB

Your Picture Here!

Name _____ Age _____ Address _____



Slippery Rock Watershed Coalition c/o Stream Restoration Incorporated
 A PA Non-Profit Organization
 434 Spring Street Ext.
 Mars, PA 16046

NONPROFIT
 ORGANIZATION
 U.S. POSTAGE
 PAID
 PERMIT NO. 63
 MARS, PA

Thanks to The William & Frances Aloe Charitable Foundation, Environmentally Innovative Solutions, LLC, Dominion Peoples, Amerikohl Mining, Inc., Quality Aggregates Inc., Drs. Ron & Kathy Falk Family, BioMost, Inc., Allegheny Mineral Corporation and PA DEP for their support. For more information contact: Slippery Rock Watershed Coalition, c/o Stream Restoration Incorporated (PA non-profit), 434 Spring Street Ext., Mars, PA 16046 (724)776-0161, fax (724)776-0166, sri@streamrestorationinc.org, www.srwc.org. Sept. distribution: 1355 copies

H.O.P.E. (Highlighting Other Partnership Efforts)

Reeds Run Restoration Project— A GREAT EXAMPLE OF PARTNERING!!!!

The **Aultman Watershed Association for Restoring the Environment (AWARE)** has been working to restore the Reeds Run sub-watershed for nearly a decade. Their persistence has paid off! After an initial study of the project area completed in 2007, the headwaters of Reeds Run were determined to be impacted from an old coal refuse pile. In the 1980's, Rochester & Pittsburgh Coal Company reclaimed a large portion of the refuse, removing 800,000 tons of material; however, some refuse remained along the bank of Reeds Run. This refuse continued to impact the stream. Thanks to one of their partners in this project, **Robindale Energy Services**, the remaining refuse is being taken to fuel the Seward Generating Station, a circulating-fluidized bed power plant near Johnstown, PA.



Refuse being loaded into a truck headed to the power plant.

As with most projects, a few challenges have been encountered at the site. For instance, some of the refuse has been determined to be unsuitable for use by the power plant due to the presence of significant clay material. A new partner, **Harsco Minerals**, came to the rescue and is providing an alkaline material approved for mine reclamation called **Mineral CSA** to mix with the non-commercial refuse. Mineral CSA is a by-product of the removal of metals from steel slag. This highly alkaline product is a welcome addition to the site.



Mineral CSA is unloaded & mixed with non-commercial refuse.

Even though the impact from degraded drainage is expected to be essentially abated, a wetland will be created in the footprint of the refuse by another project partner, **Quality Aggregates Inc.**

This project is a wonderful example of a successful public-private partnership effort. One of the worst pollution sites in Aultman's Run is being reclaimed **thanks in large part to Robindale Energy Services, Harsco Minerals, and Quality Aggregates**. Thanks to the **PA DEP** and everyone for making this project happen!!!