

THE CATALYST

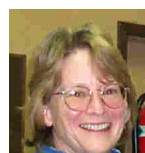
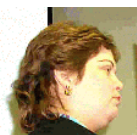
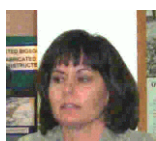
SLIPPERY ROCK WATERSHED COALITION MONTHLY ACTIVITIES UPDATE

NEXT MEETING: Wednesday, May 10 @ 7:00 PM, Macoskey Center - Harmony House, Pizza & Pop will be provided!!

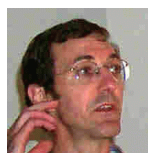
John Oliver Delivers Remarks to a Packed House at Grove City College

As part of Grove City College's Prestigious Lecture series, **John Oliver**, Secretary PA Department of Conservation and Natural Resources, spoke to over 100 students, faculty, and local residents. He began by commending **Dr. Brenner** for his hard work in the field of Wetland Ecology and continued by speaking on topics ranging from the foundation of the **DCNR** to the **Growing Greener initiative**. In addition, **Mr. Oliver** stressed the importance of the developing cooperative relationship between state agencies and industry in successfully addressing the environmental concerns of PA. The contributions made by students and faculty through research at the Jennings Environmental Education Center in the development of methods to treat abandoned mine drainage were also recognized. **Mr. Oliver** provided a wealth of information and afterwards answered numerous questions from students and faculty.

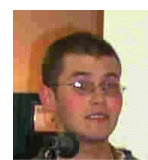
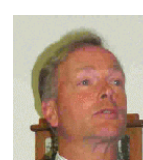
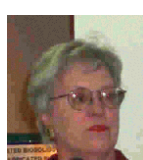
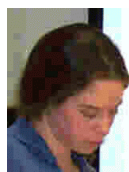
Thank you Mr. Oliver for speaking at Grove City College!



2000 SRWC Symposium



The border of faces consists of those who spoke on either Thursday or Friday. Starting at the upper left hand corner and moving right; **Jo Ann Albert**, Evn. Ed. Coordinator; **Jeff Ankrom**, Prj. Mgr., Quality Aggregates Inc.; **Connie White**, Teacher, Wilmington School District; **Fred Brenner**, PhD., Professor, GCC; **Margaret Dunn**, Geologist, BioMost, Inc.; **Heather Doyle**, Biology Student, SRU; **Dave Johnson**, Center Coordinator, JEEC; **Dave Johnston**, Butler County Planning Commission; **Valentine Kefeli**, Ph.D., Macoskey Center, SRU; **Ryan Snow**, Student Macoskey Center, SRU; **John Stilley**, President, Amerikohl Mining, Inc.; **Taylor Zenter**, Geosciences Student, SRU; **Mary Jo White**, State Senator; **George Watzlaf**, Mining Research Engineer, US Department of Engery, NETL; **Kim Kosick**, Biology Student, GCC; **Dan Dougherty**, Biology Student GCC; **Corrie Gardner**, Biology Student, GCC; **Mark Killar**, Reg. Coordinator, WPCAMR, **Carol Tippie** (not seen in picture) Biology Student, GCC.





Timothy Danehy, BioMost, Inc. presenting **Janice Belgredan** with the 2000 SRWC Appreciation Award.



Boy Scout Troop 204 presented their watershed work in a poster



Connie White and students form the Wilmington Area High School.



Robert Dolence, Deputy Secretary for the PA DEP. Mr. Dolence presented Ms. Dunn with a letter from the Governor. More next month...



Students from Slippery Rock High School with their teacher **Tony Consbruck**.



John Oliver, Secretary of the PA DCNR

Quality Aggregates Inc. Scouts, and Earth Day

On April 29 over 100 scouts from 10 different troops from around the area will travel to the Quality Aggregates, Inc. Princeton Limestone Quarry. The scouts will plant 2000 pine trees to celebrate Earth Day. They will work alongside environmental specialists and Quality employees to complete the reforestation of the Kennedy Mine. Several people from Stream Restoration Inc., and Environmental Scientist **Bob Beran** of Pellegrini Engineers will assist the scouts and offer insight on the importance of environmental maintenance. [Look for pictures in a future Catalyst.](#)

Next month: **Slippery Rock University and PA DEP field tour**
Quality Aggregates, Inc. donates stone to the Macoskey Center and
Shalston Trucking donates transportation.
Also next month more information about the SRWC Get-together

Thanks to The William & Frances Aloe Charitable Foundation, Amerikohl Mining, Inc., Quality Aggregates Inc., and Allegheny Mineral Corporation for their support. For more information contact: Slippery Rock Watershed Coalition, c/o Stream Restoration Incorporated (PA non-profit), 3016 Unionville Road, Cranberry Twp., PA 16066, (724)776-0161, fax (724)776-0166, sri@ccia.com. May Distribution: 437 copies